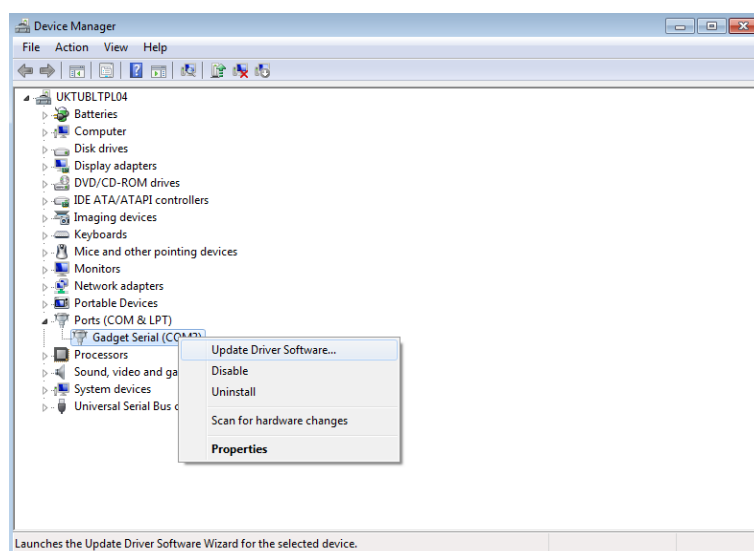


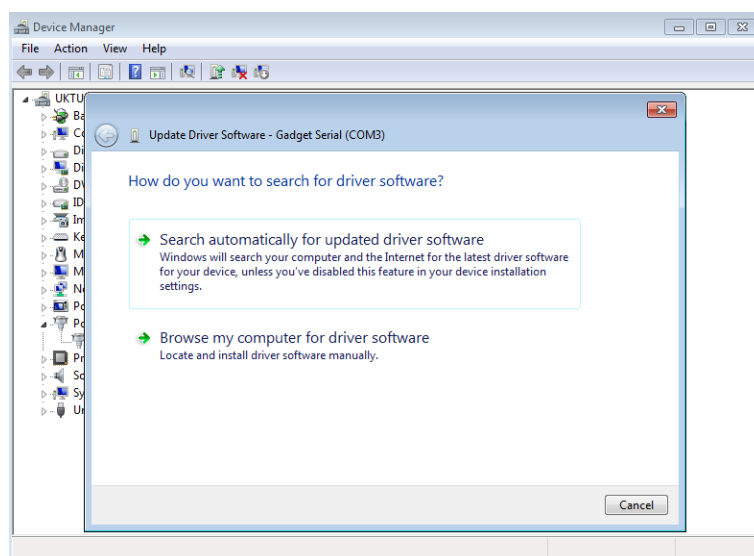
Remote Connection – USB Drivers

Windows 7 64bit Mercury USB Driver Installation Guideline

1. On your PC log on to account with administration privileges.
2. Go to <http://mymercurysupport.com/downloads/applications>; download the latest package of USB drivers and uncompress the files to specific location on your PC.
3. Power up Mercury system and connect it to PC via USB cable, at this point Windows 7 will attempt to install USB driver and most likely fail to install correct device.
4. Go to Control Panel > System > System and Security > Device Manager and select to update device driver for Gadget Serial as shown in picture below. Most likely there will be a yellow exclamation mark icon next to device.

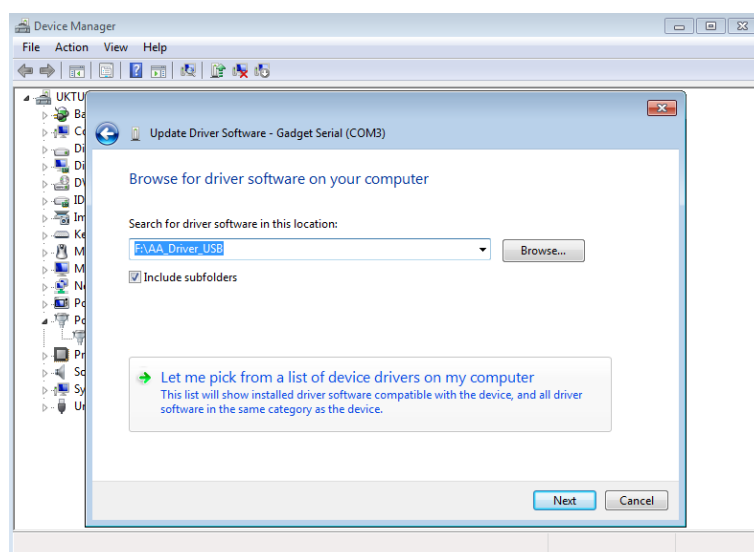


5. Select “Browse my computer for driver software”

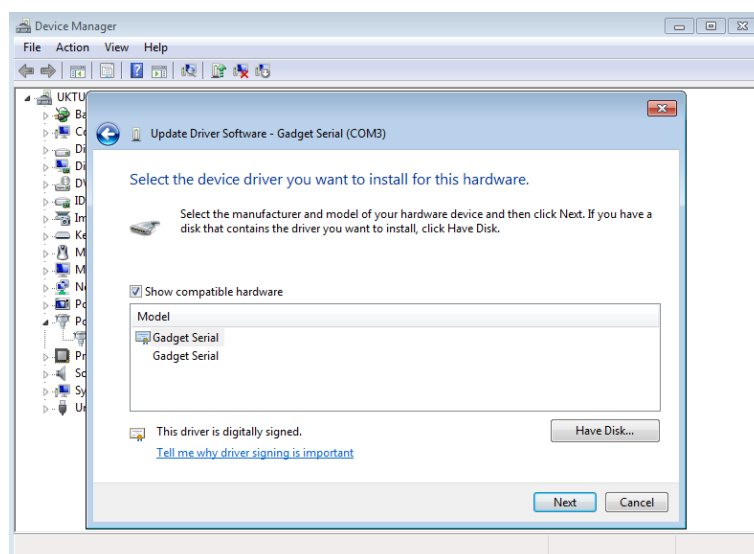


Remote Connection – USB Drivers

6. Select “Let me pick from a list of device drivers on my computer”

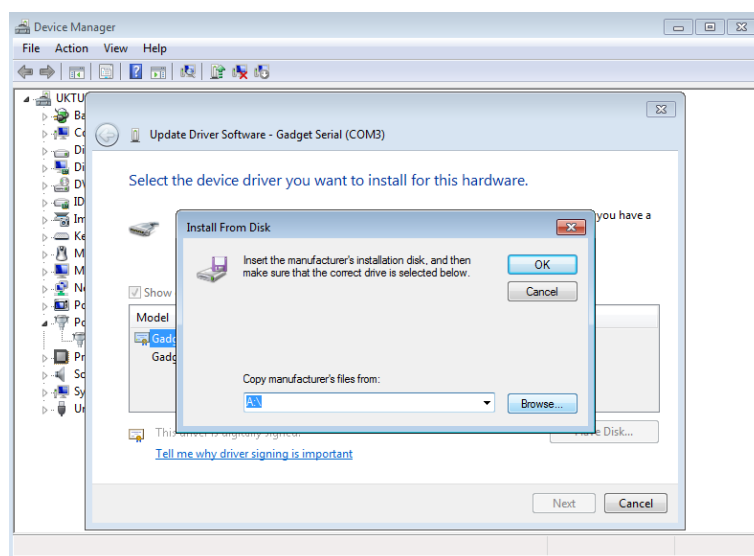


7. Select “Have Disc”



Remote Connection – USB Drivers

8. Browse for the folder where OI USB driver package has been uncompressed and click OK.



9. Windows will finalise the driver installation.